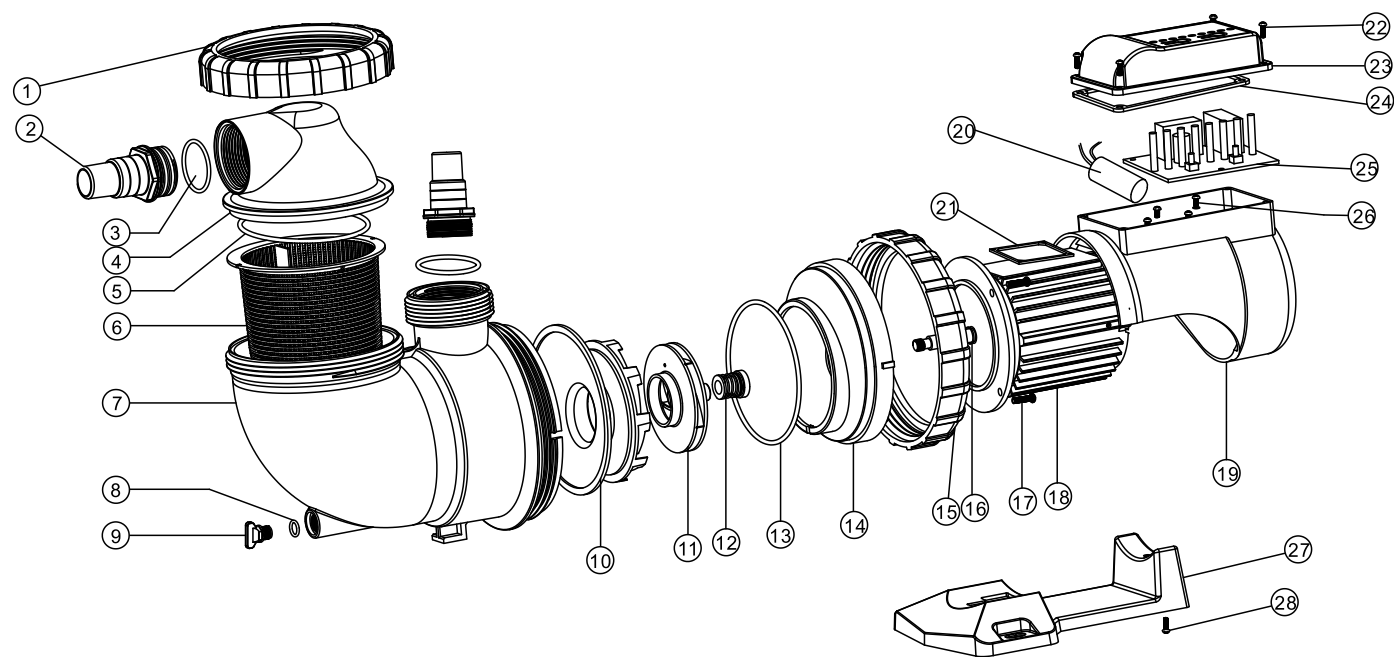


AMU012TP/AMU012P/AMU016TP/AMU016P/AMU020TP/AMU020P
PUMP PARTS FOR AQUA-MINI



| Key No. | Part No. | Product Description | Qty | Key No. | Part No. | Product Description | Qty |
|---------|----------|---------------------------------------|-----|---------|----------|--|-----|
| 1 | 01021067 | Nut for lid | 1 | 13 | 02020011 | O-Ring for flange | 1 |
| 2 | 89280105 | 1.5" union (optional) | 2 | 14 | 01021069 | Flange | 1 |
| | 01013015 | 1.5"Connector (for input) | 1 | 15 | 01021068 | Nut for body | 1 |
| | 01013051 | 32-38 Union (optional) | 2 | 16 | 02011156 | Motor Slinger | 1 |
| 3 | 02011104 | O-Ring for 1.5" Union | 2 | 17 | 03011067 | Screw for flange | 4 |
| | 02020013 | O-Ring for 32-38 Union | 2 | 18 | 04020099 | Motor(AMU012TP/AMU012P)(220V/50HZ)(220V/60HZ) | 1 |
| 4 | 01041045 | Transparent Lid | 1 | | 04020100 | Motor(AMU016TP/AMU016P)(220V/50HZ)(220V/60HZ) | 1 |
| 5 | 02020049 | O-Ring for lid | 1 | | 04020101 | Motor(AMU020TP/AMU020P)(220V/50HZ)(220V/60HZ) | 1 |
| 6 | 01111104 | Basket | 1 | 19 | 01321019 | Fan Cover | 1 |
| 7 | 01021070 | AMU pump body | 1 | 20 | 04016036 | Capacitor for AMU012TP/AMU012P&AMU016TP/AMU016P(220V/50Hz,220V/60Hz) | 1 |
| 8 | 02020014 | O-Ring | 1 | | 04016030 | Capacitor for AMU020TP/AMU020P(220V/50Hz,220V/60Hz) | 1 |
| 9 | 01111017 | Drain Plug | 1 | 21 | 02020048 | Cover Slinger | 1 |
| 10 | 01111103 | Diffuser | 1 | 22 | 03011007 | Screw for cable Box | 4 |
| 11 | 01311045 | Impeller(AMU012TP/AMU012P)(220V/50HZ) | 1 | 23 | 01321018 | Cable Box | 1 |
| | 01311046 | Impeller(AMU016TP/AMU016P)(220V/50HZ) | 1 | 24 | 02020012 | Slinger for cable Box | 1 |
| | 01311044 | Impeller(AMU020TP/AMU020P)(220V/50HZ) | 1 | 25 | 04015041 | PCB (for AMU012TP AMU016TP AMU020TP) | 1 |
| | 01311051 | Impeller(AMU012TP/AMU012P)(220V/60HZ) | 1 | 26 | 03011100 | Screw | 4 |
| | 01311045 | Impeller(AMU016TP/AMU016P)(220V/60HZ) | 1 | 27 | 01111102 | Base | 1 |
| | 01311046 | Impeller(AMU020TP/AMU020P)(220V/60HZ) | 1 | 28 | 03011006 | Screw for base | 1 |
| 12 | 04015002 | 1/2" Mechanical seal | 1 | | | | |



AQUA-MINI Series Centrifugal Pump
Installation & Operating Instructions
Keep this manual for future reference.

⚠ WARNINGS:

- * EMAUX pumps must be wired to the main supply through an approved and licensed electrician.
- * If the supply cord is damaged, it must be replaced by the manufacturer, its service agent or similarly qualified persons in order to avoid a hazard;
- * This appliance is not intended for use by persons (including children) with reduced physical, sensory or mental capabilities, or lack of experience and knowledge, unless they have been given supervision or instruction concerning use of the appliance by a person responsible for their safety; children should be supervised to ensure that they do not play with the appliance;
- * The maximum total head is 1 metre;
- * Pollution of the liquid could occur due to leakage of lubricants;
- * The pump must not be used when people are in the water;
- * The pump must be supplied through a residual current device(RCD) having a rated residual operating current not exceeding 30 mA.

NOTICE:

Pump suction and discharge connections have moulded in thread stops, DO NOT try to tighten beyond these Stops.

INSTALLATION

CAUTION: THE PUMP SHOULD BE INSTALLED ACCORDING TO YOUR LOCAL ELECTRICAL INSTALLATION ORDINANCES AND REGULATIONS.

ONLY QUALIFIED, LICENSED PERSONNEL SHOULD INSTALL PUMP.

1. Locate pump as close to pool as possible, preferably in a dry, well ventilated area away from direct sunlight. Pump Mount must:

- Be on solid, level, rigid and vibration free surface.
- Allow pump suction inlet height to be as close to water level as possible.
- Allow use of short, direct suction pipe (To reduce friction loss.)
- Allow for gate valves in suction and discharge piping.
- Have adequate floor drainage to prevent flooding.
- Be protected from excess moisture.
- Allow adequate access for servicing pump and piping.

2.Fixed the pump by screws onto the platform.

3. Connect the suction and discharge pipe to the outlet and inlet of the swimming pool.

FUNCTIONS

| CODE | MODEL NO | HORSE POWER | TIMER | PRE-FILTER |
|----------|----------|-------------|-------|------------|
| 88028419 | AMU012TP | 0.12hp | √ | √ |
| 88027519 | AMU012T | 0.12hp | √ | |
| 88027819 | AMU012P | 0.12hp | | √ |
| 88028119 | AMU012 | 0.12hp | | |
| 88028420 | AMU016TP | 0.16hp | √ | √ |
| 88027520 | AMU016T | 0.16hp | √ | |
| 88027820 | AMU016P | 0.16hp | | √ |
| 88028120 | AMU016 | 0.16hp | | |
| 88028401 | AMU020TP | 0.20hp | √ | √ |
| 88027501 | AMU020T | 0.20hp | √ | |
| 88027801 | AMU020P | 0.20hp | | √ |
| 88028101 | AMU020 | 0.20hp | | |

⚠ CAUTION



Hazardous suction.
Can trap hair or
body part, causing
severe injury or
death.
Do not block
suction.

OPERATION

- ⚠ **NEVER** run pump dry! Running pump dry may damage seals, causing leakage and flooding! Fill pump with water before starting motor.
- ⚠ Before removing lid:
STOP PUMP before proceeding.
CLOSE GATE VALVES in suction and discharge pipes.
RELEASE ALL PRESSURE from pump and piping system.
NEVER tighten or loosen screws while pump is operation.
- ⚠ Do not block pump suction! To do so with body may cause severe or fatal injury. Children using pool must **ALWAYS** have close adult Supervision!

PRIMING PUMP:

- ✳ Release all air from filter and piping system: see filter owner manual.
- ✳ In a flooded suction system (water source higher than pump), pump will prime itself when suction and discharge valves are opened.
- ✳ If pump is not in a flooded suction system, unscrew and remove basket lid; fill basket and pump with water.
- ✳ Clean and inspect O-Ring; re-install the basket lid.
- ✳ Turn clockwise to tighten the lid.

NOTICE: Tighten basket lid by hand only.
Pump should prime now. Priming time will depend on vertical length of suction lift and horizontal length of suction piping.

TROUBLE SHOOTING

MOTOR DOES NOT START

1. Disconnect switch or circuit breaker in off position
2. Fuses blown or thermal overload open
3. Locked motor shaft
4. Motor windings burned out
5. Defective starting switch inside single phase motor
6. Disconnected or defective wiring
7. Low voltage

PUMP DOES NOT REACH FULL SPEED

1. Low voltage
2. Pump connected for wrong voltage

MOTOR OVERHEATS (protector trips)

1. Low voltage
2. Motor windings connected for wrong voltage on dual voltage model
3. Inadequate ventilation

PUMP DELIVERS NO WATER

1. Pump is not primed
2. Closed valve in suction or discharge line
3. Leakage of air into suction system
4. Impeller clogged

LEAKAGE OF WATER AT SHAFT

1. Shaft seal requires replacement

TROUBLE SHOOTING

NOTE: If the recommendations in the trouble shooting portion of this manual do not solve your particular problem(s), please contact your local dealer for service.

ROUTINE MAINTENANCE

The only routine maintenance needed is inspection/cleaning of the basket (pre-filter basket). Debris or trash that collects in basket will choke off water flow through the pump. Follow instructions below to clean the basket:

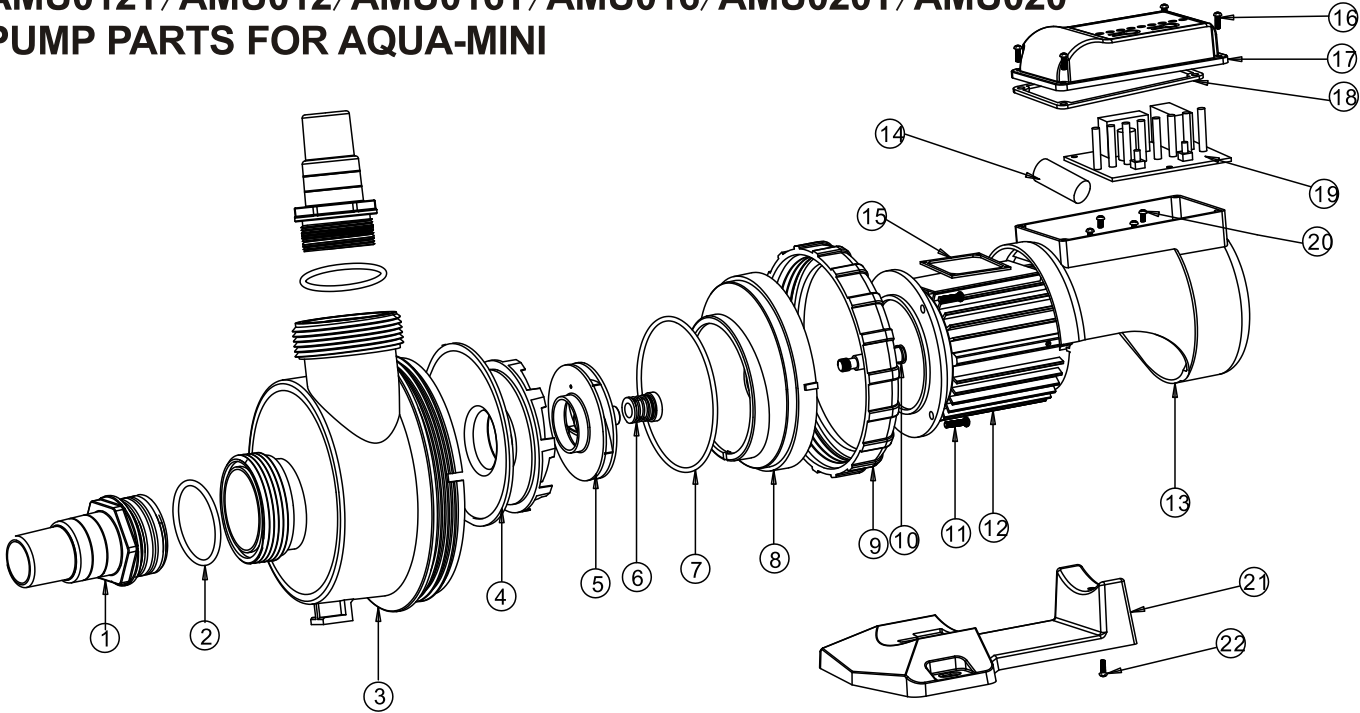
- 1.Stop pump, close gate valve in suction and discharge, and release all pressure from system before proceeding.
- 2.Unscrew basket lid (pre-filter lid) by turning counterclockwise.
- 3.Remove basket and clean. Flush basket with water, make sure that the holes are clean. Replace the basket and fill the pump body with water. -If basket is replaced backwards cover will not fit on pump body.
- 4.Clean and inspect lid.
- 5.Clean the O-ring and its groove on the trap pump body (pre-filter) and replace lid. The lid should be tightened by hand only.
- 6.Prime pump (see priming instructions above)

SERVICE & REPAIR PARTS

Refer all service to your local agent or dealer as his knowledge of your equipment makes him the best qualified source of information. Order all repair parts through your dealer. Give the following information when ordering repair parts:

1. Unit name, model number and part number.
2. Description of part.

AMU012T/AMU012/AMU016T/AMU016/AMU020T/AMU020
PUMP PARTS FOR AQUA-MINI



| Key No. | Part No. | Product Description | Qty | Key No. | Part No. | Product Description | Qty |
|---------|----------|-------------------------------------|-----|---------|----------|--|-----|
| 1 | 89280105 | 1.5"union (optional) | 2 | 10 | 02011156 | Motor Slinger | 1 |
| | 01013051 | 32-38 Union (optional) | 2 | 11 | 03011067 | Screw for flange | 4 |
| 2 | 02011104 | O-Ring for 1.5" Union | 2 | 12 | 04020099 | Motor(AMU012T/AMU012)(220V/50HZ)(220V/60HZ) | 1 |
| | 02020013 | O-Ring for 32-38 Union | 2 | | 04020100 | Motor(AMU016T/AMU016)(220V/50HZ)(220V/60HZ) | 1 |
| 3 | 01020018 | Body | 1 | | 04020101 | Motor(AMU020T/AMU020)(220V/50HZ)(220V/60HZ) | 1 |
| 4 | 01111103 | Diffuser | 1 | 13 | 01321019 | Fan Cover | 1 |
| 5 | 01311045 | Impeller(AMU012T/AMU012)(220V/50HZ) | 1 | 14 | 04016036 | Capacitor for AMU012T/AMU012 AMU016T/AMU016 (220V/50Hz) | 1 |
| | 01311046 | Impeller(AMU016T/AMU016)(220V/50HZ) | 1 | | 04016030 | Capacitor for AMU020T/AMU020(220V/60Hz) | 1 |
| | 01311044 | Impeller(AMU020T/AMU020)(220V/50HZ) | 1 | 15 | 02020048 | Cover Slinger | 1 |
| | 01311051 | Impeller(AMU012T/AMU012)(220V/60HZ) | 1 | 16 | 03011007 | Screw for cable Box | 4 |
| | 01311045 | Impeller(AMU016T/AMU016)(220V/60HZ) | 1 | 17 | 01321018 | Cable Box | 1 |
| | 01311046 | Impeller(AMU020T/AMU020)(220V/60HZ) | 1 | 18 | 02020012 | Slinger for cable Box | 1 |
| 6 | 04015002 | 1/2"Mechanical seal | 1 | 19 | 04015041 | PCB (for AMU012T AMU016T AMU020T) | 1 |
| 7 | 02020011 | O-Ring for flange | 1 | 20 | 03011100 | Screw | 4 |
| 8 | 01021069 | Flange | 1 | 21 | 01111102 | Base | 1 |
| 9 | 01021068 | Nut for body | 1 | 22 | 03011006 | Screw for base | 1 |